



Historic Hyannis Port Location

9 Hawthorne Avenue, Hyannis Port

Price	\$ 4,400,000
Rooms:	Nine
Bedrooms:	Three
Bathrooms:	Three Full, One Half
Living Area:	3,416 square feet
Assessment:	\$ 2,359,800 / 2025
Acres:	.14 Acres
Year Built:	1927
Heating:	Hot Water / Gas
Cooling:	Central AC
Water:	Town
Sewer:	Private
Taxes:	\$ 20,695 / 2025



LUXURY COLLECTION™

**BERKSHIRE
HATHAWAY**
HOMESERVICES

ROBERT PAUL
PROPERTIES

Nestled in the heart of historic Hyannis Port, this beautifully maintained residence captures the timeless charm of one of Cape Cod's most coveted seaside enclaves. From its elevated setting, the home enjoys sweeping vistas of Hyannis Harbor and Nantucket Sound, with natural light and sea breezes enhancing every level of its 3,400 square feet of living space. Designed for gathering, the interiors offer warm and inviting spaces—including a sun-filled kitchen, welcoming living room, and a delightful sun room—all framed by stunning water views. Upstairs, both second- and third-floor bedrooms enjoy equally captivating outlooks, creating a serene retreat. A spacious second-level deck is perfectly positioned for soaking in the ever-changing coastal panorama. This property is located within the Hyannis Port Civic Association and is a rare opportunity to experience the beauty, tradition, and lifestyle of Hyannis Port. The information contained herein has been obtained through sources deemed reliable but cannot be guaranteed as to its accuracy. The information contained herein has been obtained through sources deemed reliable but cannot be guaranteed as to its accuracy. Buyers are encouraged to do their own due diligence through independent verification.



The information contained herein has been obtained through sources deemed reliable but cannot be guaranteed as to its accuracy. Buyers are encouraged to do their own due diligence through independent verification.

Exclusively Represented by

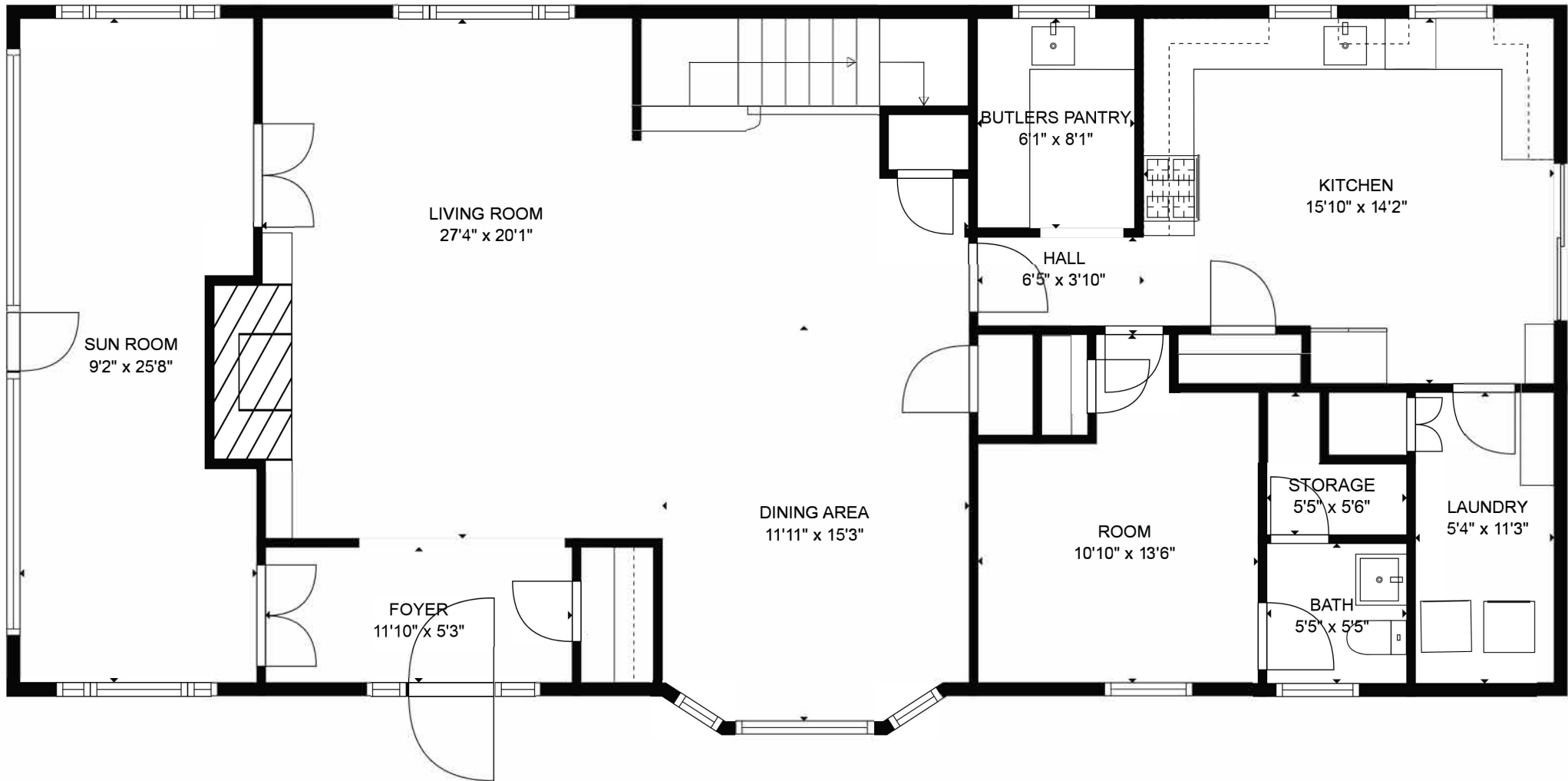
Robert B. Kinlin

RKinlin@robertpaul.com - 508.648.2739

www.RobertPaul.com

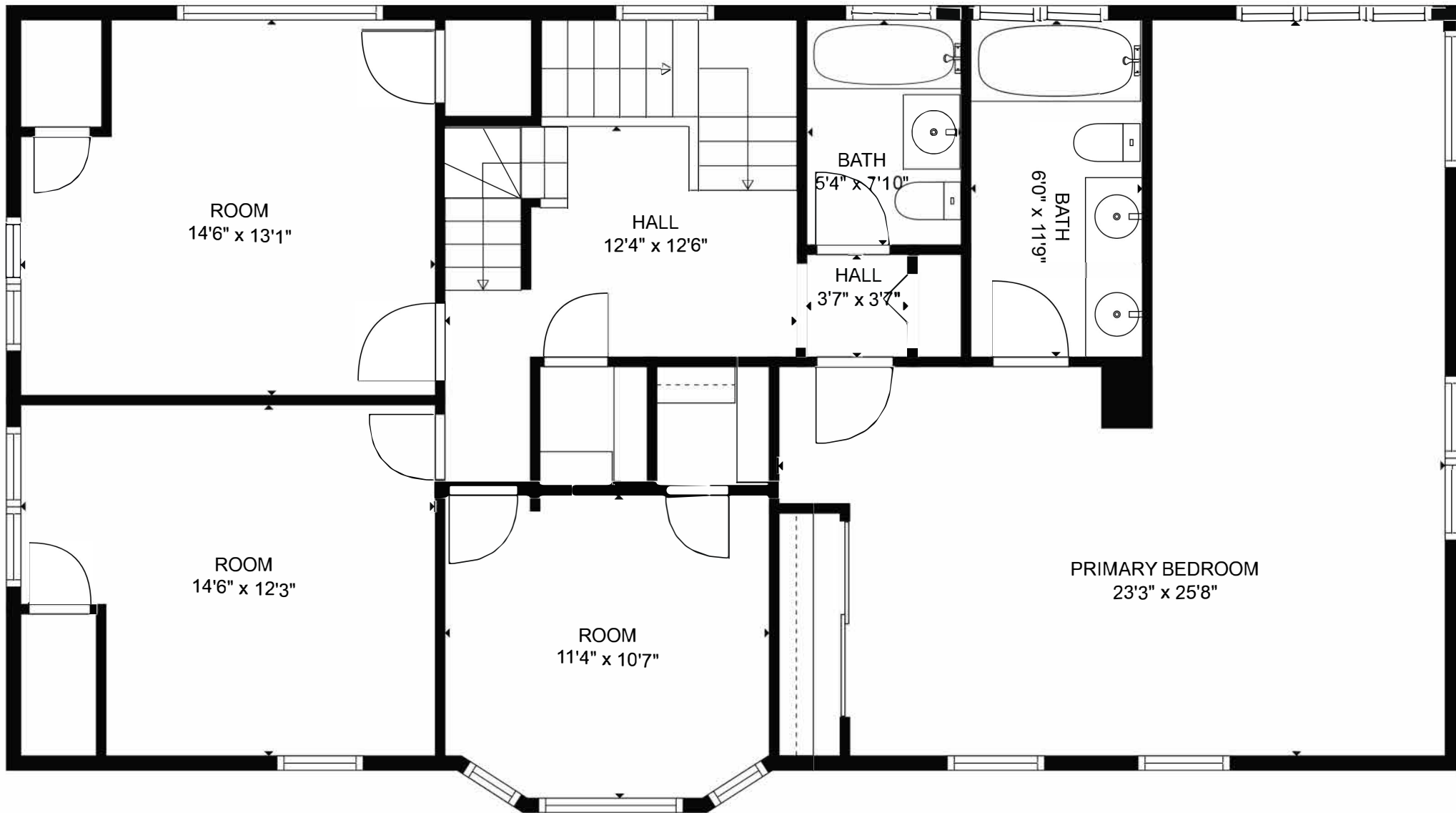
Berkshire Hathaway HomeServices Robert Paul Properties

©2023 BHH Affiliates, LLC. An independently operated subsidiary of HomeServices of America, Inc., a Berkshire Hathaway affiliate, and a franchisee of BHH Affiliates, LLC. Berkshire Hathaway HomeServices and the Berkshire Hathaway HomeServices symbol are registered service marks of Columbia Insurance Company, a Berkshire Hatha-



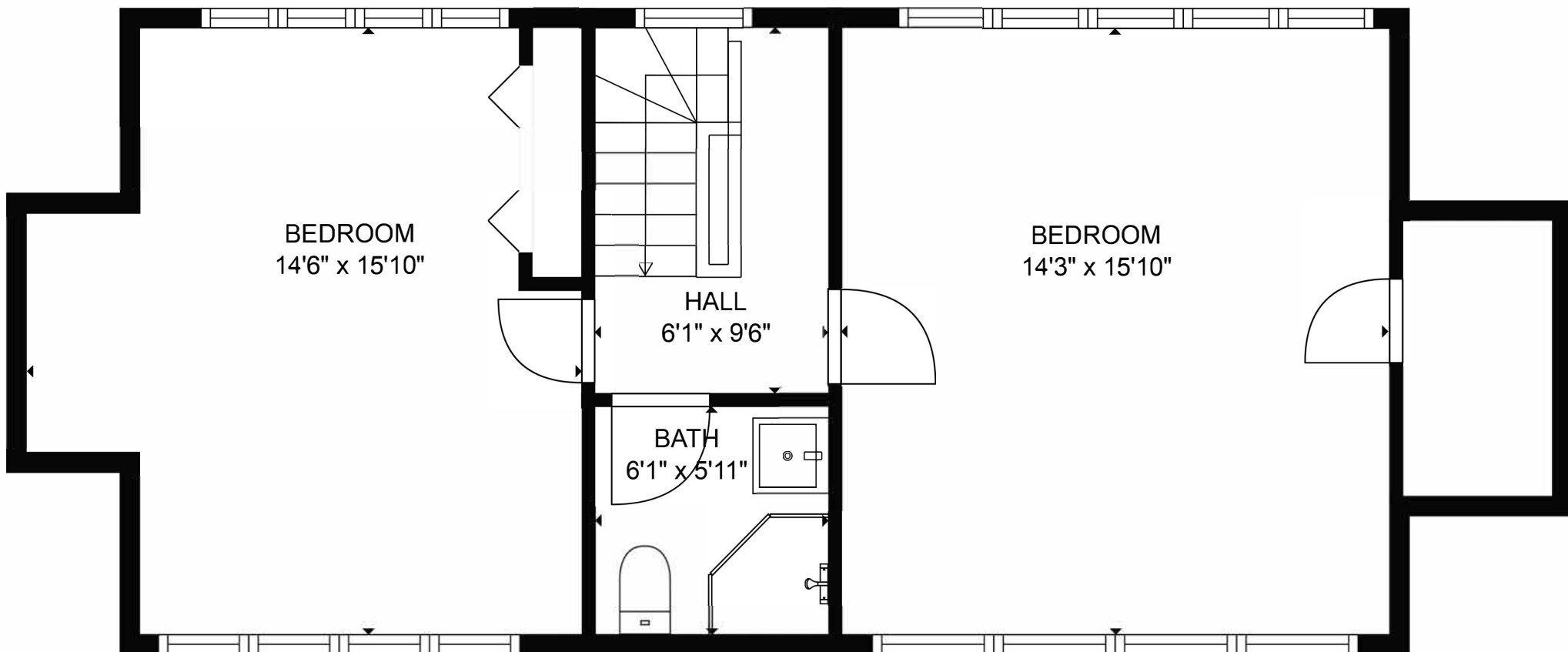
TOTAL: 3416 sq. ft
FLOOR 1: 1578 sq. ft, FLOOR 2: 1318 sq. ft, FLOOR 3: 520 sq. ft

FLOOR PLAN CREATED BY CUBICASA APP. MEASUREMENTS DEEMED HIGHLY RELIABLE BUT NOT GUARANTEED.



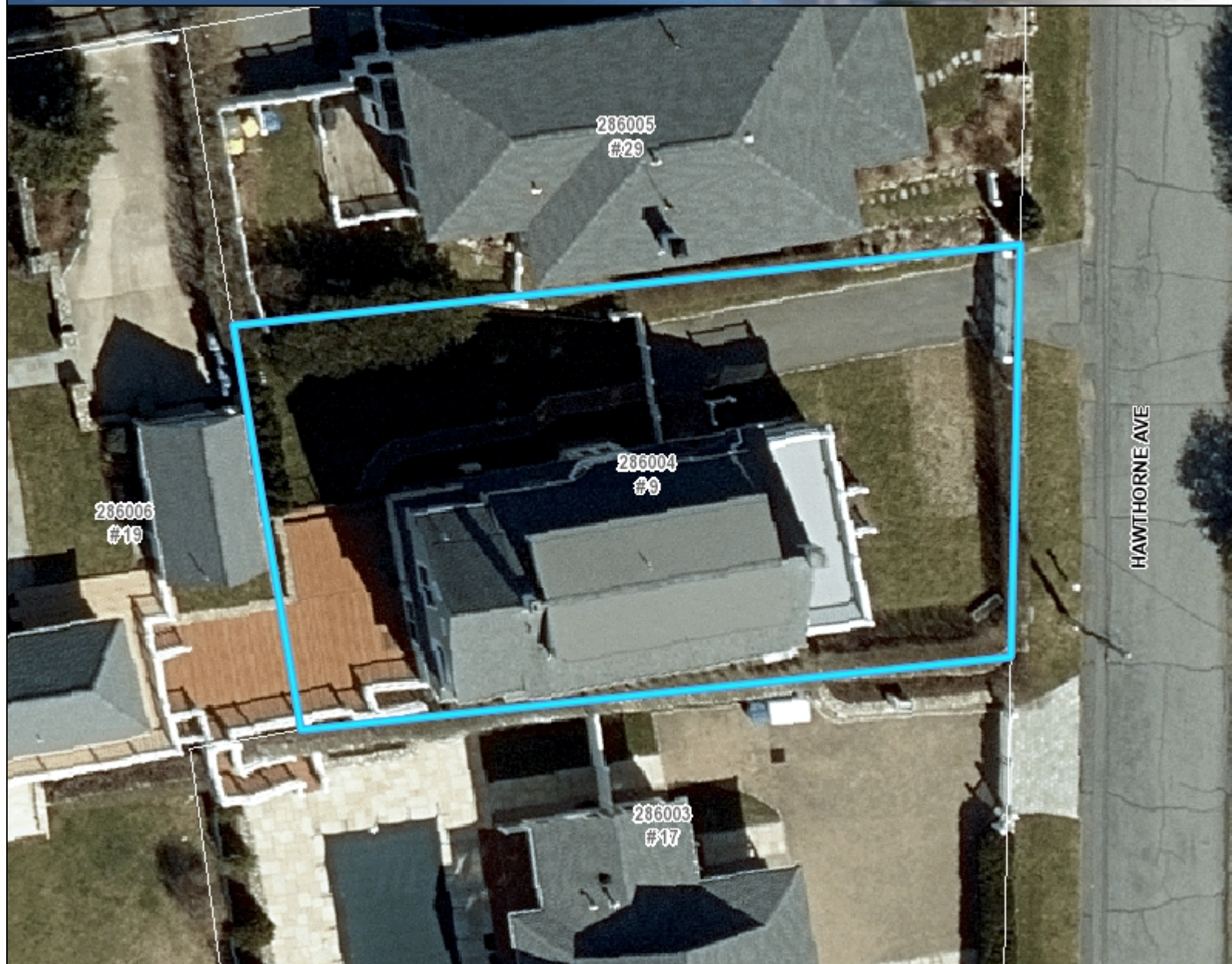
TOTAL: 3416 sq. ft
FLOOR 1: 1578 sq. ft, FLOOR 2: 1318 sq. ft, FLOOR 3: 520 sq. ft

FLOOR PLAN CREATED BY CUBICASA APP. MEASUREMENTS DEEMED HIGHLY RELIABLE BUT NOT GUARANTEED.



TOTAL: 3416 sq. ft
FLOOR 1: 1578 sq. ft, FLOOR 2: 1318 sq. ft, FLOOR 3: 520 sq. ft

FLOOR PLAN CREATED BY CUBICASA APP. MEASUREMENTS DEEMED HIGHLY RELIABLE BUT NOT GUARANTEED.



Map printed on: 7/8/2025

0 21 42 Feet

Approx. Scale: 1 inch = 21 feet



This map is for illustration purposes only. It is not adequate for legal boundary determination or regulatory interpretation. This map does not represent an on-the-ground survey. It may be generalized, may not reflect current conditions, and may contain cartographic errors or omissions.

Parcel lines shown on this map are only graphic representations of Assessor's tax parcels. They are not true property boundaries and do not represent accurate relationships to physical objects on the map such as building locations.



Town of Barnstable GIS Unit

367 Main Street, Hyannis, MA 02601

508-862-4624

gis@town.barnstable.ma.us